

Product:

PSMA | ADMINISTRATIVE
BOUNDARIES

Prepared:

May 2018
Version 1.0



Administrative Boundaries

Data Release Report

May 2018

Revision History

Date	Version	Change	Coordinator
May 2018	1.0	Initial Version	Anthony Hesling

Disclaimer

PSMA Australia believes this publication to be correct at the time of printing and does not accept responsibility for any consequences arising from the use of information herein. Readers should rely on their own skill and judgement to apply information to particular issues.

This work is copyright. Apart from any use as permitted under the Copyright Act 1968, no part may be reproduced by any process without prior written permission of PSMA Australia Limited.

Contents

Introduction.....	1
Document Purpose	1
Audience	1
Support	1
Overview.....	2
Updates and Issues.....	3
Updates	3
Issues	5
Future Considerations	6
Appendix A.....	7
Summary Statistics	12
Suburbs/Localities	12
Wards	14

Introduction

PSMA's Administrative Boundaries dataset is Australia's most comprehensive national collection of boundaries including government, statistical and electoral boundaries. The dataset contains boundaries in six themes: Australian Bureau of Statistics (ABS) boundaries, electoral boundaries, state and territory boundaries, local government areas, suburbs/localities, and town points. Some of the themes, such as the ABS, include further layers of data to support a wide range of analysis and segmentation activities. For more information, please refer to the Administrative Boundaries Product Description.

Document Purpose

This document provides a description of the issues, changes, features, updates and overarching statistics relating to the applicable data release. This document should be read in conjunction with the relevant Product Description.

Audience

This document is made available to PSMA staff, data contributors, direct clients and end users. It is intended to be used by business managers, data managers and analysts as a guide and reference to understanding the content and variations within a data release.

Support

PSMA Australia Support

PSMA Australia Limited

www.psmas.com.au/contact

Overview

- The May 2018 data release of Administrative Boundaries contains updates to ABS Boundaries 2016, Suburbs/Localities, Local Government Areas, Wards and Mesh Blocks.
- New Localities have been added for QLD (1).
- Detailed listings and Significant Area Changes can be found in the Updates and Issues section of this report.
- ABS Boundaries 2016 Theme now includes layers for Remoteness Areas (RA) and Socio-Economic Indexes for Areas (SEIFA).
- ABS Boundaries 2016 Significant Urban Area (SUA) had missing data for the AREA_SQKM field, which has now been added.
- ABS Boundaries 2016 Urban Centre Localities (UCL) had incorrect data in the UCL_2016 table for Victoria and WA, which has now been corrected.
- Summary Statistics for each theme can be found at the end of this report.

Updates and Issues

Updates

ABS 2016 Theme

New layers have been added for Remoteness Areas (RA) and Socio-Economic Indexes for Areas (SEIFA).

The Remoteness Areas (RA) layer includes two additional tables called REMOTENESS_2016 and REMOTENESS_2016_POLYGON for each State/Territory.

The Socio-Economic Indexes for Areas (SEIFA) layer includes one additional table for each State/Territory.

The data model and tables for the additional new layers are provided in Appendix A and the updated product description.

ABS Boundaries 2016 Significant Urban Area (SUA) tables had data missing for the AREA_SQKM field, the tables have been updated with the field populated based on data sourced from the ABS. In addition, the Urban Centre Localities (UCL) for Victoria and WA had incorrect names in the UCL_2016_NAME field of the UCL_2016 table.

Localities

- New Localities are listed below:

Localities		
Insertions	Name	Size (km ²)
QLD3400	QUETTA	1300.7

- Spatial (area) changes greater than 1 km² for Locality boundaries are shown below:

State	LC_PLY_PID	Name	Variation km ² (approx)	Description
QLD	67103	PEAK VALE	-1069.8	Decreased in size due to realigning of the boundary with the new Locality of QUETTA
QLD	67128	MISTAKE CREEK	-230.9	Decreased in size due to realigning of the boundary with the new Locality of QUETTA
QLD	67080	WOLFGANG	-3.8	Decreased in size due to realigning of the boundary with CLERMONT
QLD	66932	GREENMOUNT	-2.5	Decreased in size due to realigning of the boundary with NOBBY

State	LC_PLY_PID	Name	Variation km ² (approx)	Description
QLD	67104	SPRINGFIELD	-1.2	Decreased in size due to realigning of the boundary with MOUNT SURPRISE
QLD	66982	MOUNT SURPRISE	1.2	Increased in size due to realigning of the boundary with SPRINGFIELD
QLD	66932	NOBBY	2.5	Increased in size due to realigning of the boundary with GREENMOUNT
QLD	66834	CLERMONT	3.8	Increased with size due to realigning of the boundary of WOLFGANG
SA	22514	MUDAMUCKLA	-52.9	Decreased in size due to realigning of the boundary with PUREBA
SA	22506	NANTAWARRA	-1.4	Decreased in size due to realigning of the boundary with the new locality of BEAUFORT
SA	22505	BEAUFORT	1.4	Increased in size due to realigning of the boundary with the new locality of NANTAWARRA
SA	22513	PUREBA	52.9	Increased in size due to realigning of the boundary with the new locality of MUDAMUCKLA
WA	17021	DIRK HARTOG ISLAND	2.5	Increased in size due to realigning of the boundary with the coastline

Local Government Areas (LGAs)

- There are no New and Retired LGAs for this Release:
- Other Spatial (area) changes greater than 1 km² for LGA boundaries are shown below:

State	LG_PLY_PID	Name	Variation km ² (approx)	Description
NSW	3049	INVERELL	-1.2	Decreased in size due to realigning of the boundary with GOONDIWINDI REGIONAL in QLD
QLD	3572	MAREEBA	-1.2	Decreased in size due to realignment of the boundary with ETHERIDGE
QLD	3562	ETHERIDGE	1.2	Increased in size due to realignment of the boundary with MAREEBA

Wards

- New and retired Wards are listed below:

Localities		
Insertions	Name	Size (km ²)
NT166	EAST WARD	304.9
Deletions	Name	Size (km ²)
NT92	EAST WARD WARD	-304.9

Issues

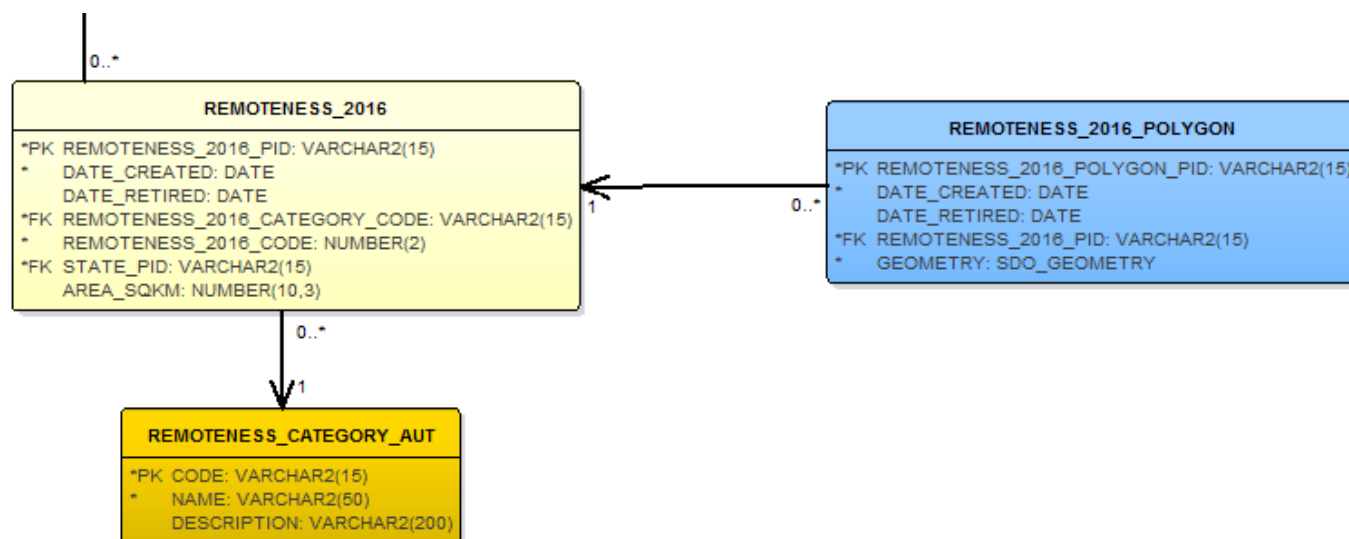
- Nil.

Future Considerations

- Nil

Appendix A

Data Model for 2016 Remoteness Areas



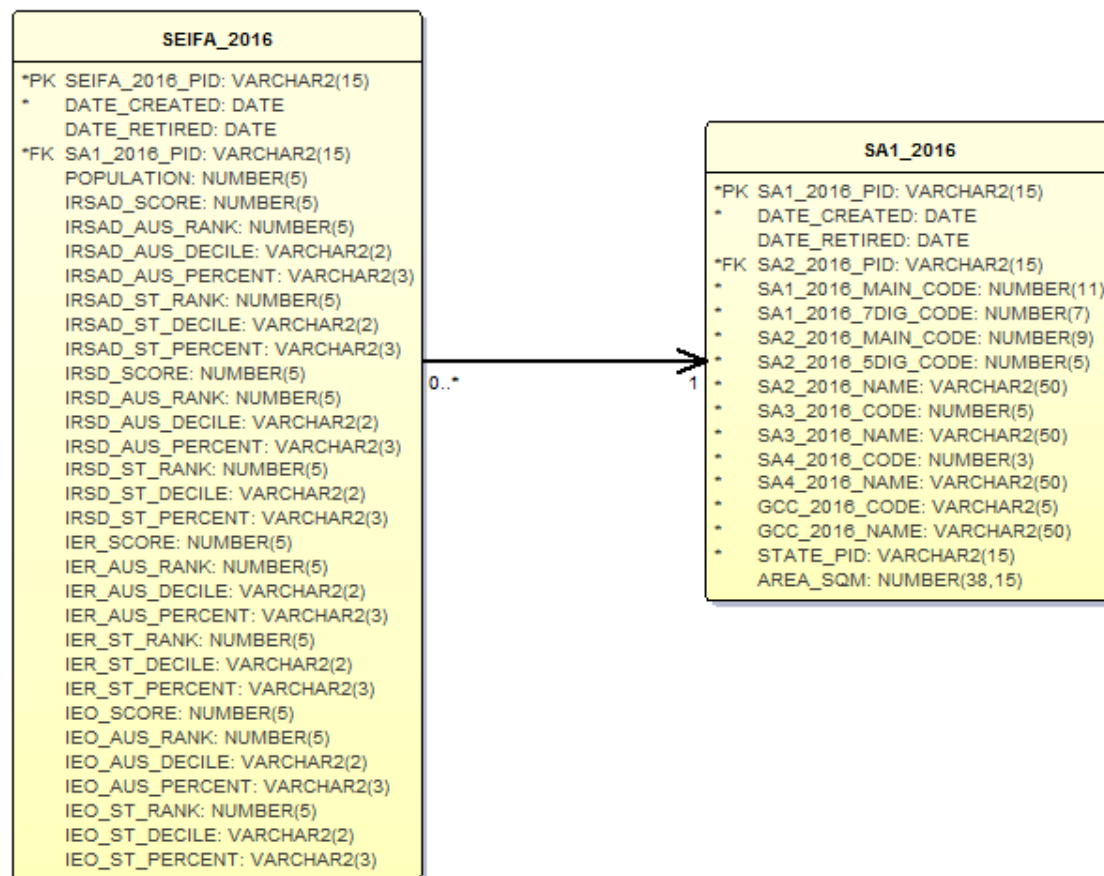
REMOTENESS_2016

Name	Data Type	Description	Prim Key	Man	F K T	F K Col	10 Char Alias
REMOTENESS_2016_PID	varchar2(15)	The Persistent Identifier is unique to the real world feature this record represents.	Y	Y	-	-	REM16_PID
DATE_CREATED	date	Date this record was created.	N	Y	-	-	DT_CREATE
DATE_RETIRED	date	Date this record was retired.	N	N	-	-	DT_RETIRE
REMOTENESS_2016_CATEGORY_CODE	varchar2(15)	Describes the classification for an area (e.g. Outer Regional Australia).	N	Y	REMOTENESS_CATEGORY_AUT	CODE	REM16_CCD
REMOTENESS_2016_CODE	number(2)	The remoteness area code	N	Y	-	-	REM16_CODE
STATE_PID	varchar2(15)	State Persistent Identifier.	N	Y	STATE	STATE_PID	STATE_PID
AREA_SQKM	Number (10,3)	Total area of the remoteness area calculated by ABS in square kilometres	N	N	-	-	AREASQKM

REMOTENESS_2016_POLYGON

Name	Data Type	Description	Prim Key	Man	F K T	F K Col	10 Char Alias
REMOTENESS_2016_POLYGON_PID	varchar2(15)	The Persistent Identifier is unique to the real world feature this record represents.	Y	Y	-	-	REM16_PPID
DATE_CREATED	date	Date this record was created.	N	Y	-	-	DT_CREATE
DATE_RETIRED	date	Date this record was retired.	N	N	-	-	DT_RETIRE
REMOTENESS_2016_PID	varchar2(15)	The Persistent Identifier of the town that this point belongs to.	Y	Y	REMOTENESS_2016	REMOTENESS_2016_PID	REM16_PID
GEOMETRY	polygon	Polygon Geometry.	N	Y	-	-	GEOMETRY

Data Model for 2016 SEIFA



SEIFA_2016

Name	Data Type	Description	Prim Key	Man	F K TABLE	F K Col	10 Char Alias
SEIFA_2016_PID	varchar2(15)	The Persistent Identifier is unique to the real world feature this record represents.	Y	Y	-	-	SEIFA16PID
DATE_CREATED	date	Date this record was created.	N	Y	-	-	DT_CREATE
DATE_RETIRED	date	Date this record was retired.	N	N	-	-	DT_RETIRE
SA1_2016_PID	varchar2(15)	The Persistent Identifier is unique to the real world feature this record represents.	N	Y	SA1_2016	SA1_2016_PID	SA1_16PID
POPULATION	number(5)	Usual resident population	N	N	-	-	POP
IRSAD_SCORE	number(5)	Index of Relative Socio-economic Advantage and Disadvantage - Score	N	N	-	-	IRSAD_SCR
IRSAD_AUS_RANK	number(5)	Index of Relative Socio-economic Advantage and Disadvantage – Ranking within Australia	N	N	-	-	IRSAD_A_RK
IRSAD_AUS_DECILE	varchar2(2)	Index of Relative Socio-economic Advantage and Disadvantage – Decile within Australia	N	N	-	-	IRSAD_A_DC
IRSAD_AUS_PERCENT	varchar2(3)	Index of Relative Socio-economic Advantage and Disadvantage – Percentile within Australia	N	N	-	-	IRSAD_A_PC
IRSAD_ST_RANK	number(5)	Index of Relative Socio-economic Advantage and Disadvantage – Ranking within State or Territory	N	N	-	-	IRSAD_S_RK
IRSAD_ST_DECILE	varchar2(2)	Index of Relative Socio-economic Advantage and Disadvantage – Decile within State or Territory	N	N	-	-	IRSAD_S_DC
IRSAD_ST_PERCENT	varchar2(3)	Index of Relative Socio-economic Advantage and Disadvantage – Percentile within State or Territory	N	N	-	-	IRSAD_S_PC
IRSD_SCORE	number(5)	Index of Relative Socio-economic Disadvantage - Score	N	N	-	-	IRSD_SCR
IRSD_AUS_RANK	number(5)	Index of Relative Socio-economic Disadvantage – Ranking within Australia	N	N	-	-	IRSD_A_RK
IRSD_AUS_DECILE	varchar2(2)	Index of Relative Socio-economic Disadvantage – Decile within Australia	N	N	-	-	IRSD_A_DC
IRSD_AUS_PERCENT	varchar2(3)	Index of Relative Socio-economic Disadvantage – Percentile within Australia	N	N	-	-	IRSD_A_PC

IRSD_ST_RANK	number(5)	Index of Relative Socio-economic Disadvantage – Ranking within State or Territory	N	N	-	-	IRSD_S_RK
IRSD_ST_DECILE	varchar2(2)	Index of Relative Socio-economic Disadvantage – Decile within State or Territory	N	N	-	-	IRSD_S_DC
IRSD_ST_PERCENT	varchar2(3)	Index of Relative Socio-economic Disadvantage – Percentile within State or Territory	N	N	-	-	IRSD_S_PC
IER_SCORE	number(5)	Index of Economic Resources - Score	N	N	-	-	IER_SCR
IER_AUS_RANK	number(5)	Index of Economic Resources – Ranking within Australia	N	N	-	-	IER_A_RK
IER_AUS_DECILE	varchar2(2)	Index of Economic Resources – Decile within Australia	N	N	-	-	IER_A_DC
IER_AUS_PERCENT	varchar2(3)	Index of Economic Resources – Percentile within Australia	N	N	-	-	IER_A_PC
IER_ST_RANK	number(5)	Index of Economic Resources – Ranking within State or Territory	N	N	-	-	IER_S_RK
IER_ST_DECILE	varchar2(2)	Index of Economic Resources – Decile within State or Territory	N	N	-	-	IER_S_DC
IER_ST_PERCENT	varchar2(3)	Index of Economic Resources – Percentile within State or Territory	N	N	-	-	IER_S_PC
IEO_SCORE	number(5)	Index of Education and Occupation - Score	N	N	-	-	IEO_SCR
IEO_AUS_RANK	number(5)	Index of Education and Occupation – Ranking within Australia	N	N	-	-	IEO_A_RK
IEO_AUS_DECILE	varchar2(2)	Index of Education and Occupation – Decile within Australia	N	N	-	-	IEO_A_DC
IEO_AUS_PERCENT	varchar2(3)	Index of Education and Occupation – Percentile within Australia	N	N	-	-	IEO_A_PC
IEO_ST_RANK	number(5)	Index of Education and Occupation – Ranking within State or Territory	N	N	-	-	IEO_S_RK
IEO_ST_DECILE	varchar2(2)	Index of Education and Occupation – Decile within State or Territory	N	N	-	-	IEO_S_DC
IEO_ST_PERCENT	varchar2(3)	Index of Education and Occupation – Percentile within State or Territory	N	N	-	-	IEO_S_PC

Summary Statistics

- Counts representing the number of records in each table are listed below, including the change since the previous Release.

Suburbs/Localities

Jurisdiction	Table	Previous Release	Previous Count	Current Count	Percentage Change
ACT	LOCALITY	Feb-18	138	138	0.00
ACT	LOCALITY_POLYGON	Feb-18	138	138	0.00
NSW	LOCALITY	Feb-18	4552	4552	0.00
NSW	LOCALITY_POLYGON	Feb-18	4572	4572	0.00
NT	LOCALITY	Feb-18	306	306	0.00
NT	LOCALITY_POLYGON	Feb-18	312	312	0.00
OT	LOCALITY	Feb-18	5	5	0.00
OT	LOCALITY_POLYGON	Feb-18	6	6	0.00
QLD	LOCALITY	Feb-18	3278	3279	0.03
QLD	LOCALITY_POLYGON	Feb-18	3331	3332	0.03
SA	LOCALITY	Feb-18	2425	2425	0.00
SA	LOCALITY_POLYGON	Feb-18	2455	2455	0.00
TAS	LOCALITY	Feb-18	775	775	0.00
TAS	LOCALITY_POLYGON	Feb-18	781	781	0.00
VIC	LOCALITY	Feb-18	2973	2973	0.00
VIC	LOCALITY_POLYGON	Feb-18	2973	2973	0.00
WA	LOCALITY	Feb-18	1695	1695	0.00
WA	LOCALITY_POLYGON	Feb-18	1731	1731	0.00

Local Government Areas

Jurisdiction	Table	Previous Release	Previous Count	Current Count	Percentage Change
NSW	LGA	Feb-18	130	130	0.00
NSW	LGA_LOCALITY	Feb-18	4986	4986	0.00
NSW	LGA_POLYGON	Feb-18	197	197	0.00
NT	LGA	Feb-18	25	25	0.00
NT	LGA_LOCALITY	Feb-18	317	317	0.00
NT	LGA_POLYGON	Feb-18	812	812	0.00
QLD	LGA	Feb-18	78	78	0.00
QLD	LGA_LOCALITY	Feb-18	3365	3366	0.03
QLD	LGA_POLYGON	Feb-18	209	209	0.00
SA	LGA	Feb-18	73	73	0.00
SA	LGA_LOCALITY	Feb-18	2069	2069	0.00
SA	LGA_POLYGON	Feb-18	171	171	0.00
TAS	LGA	Feb-18	29	29	0.00
TAS	LGA_LOCALITY	Feb-18	886	886	0.00
TAS	LGA_POLYGON	Feb-18	4357	4357	0.00
VIC	LGA	Feb-18	87	87	0.00
VIC	LGA_LOCALITY	Feb-18	3337	3337	0.00
VIC	LGA_POLYGON	Feb-18	92	92	0.00
WA	LGA	Feb-18	137	137	0.00
WA	LGA_LOCALITY	Feb-18	1738	1738	0.00
WA	LGA_POLYGON	Feb-18	165	165	0.00

Wards

Jurisdiction	Table	Previous Release	Previous Count	Current Count	Percentage Change
NT	WARD	Feb-18	49	49	0.00
NT	WARD_POLYGON	Feb-18	830	830	0.00
SA	WARD	Feb-18	148	148	0.00
SA	WARD_POLYGON	Feb-18	155	155	0.00
VIC	WARD	Feb-18	263	263	0.00
VIC	WARD_POLYGON	Feb-18	267	267	0.00
WA	WARD	Feb-18	196	196	0.00
WA	WARD_POLYGON	Feb-18	226	226	0.00